

8th note feel (8 Beat)

わかぎミュージック

作曲: 富樫 誠
採譜者: 富樫 誠

♩ = 100

A

Section A: Measures 1-4. Treble clef, common time. Dynamic marking: *v*. Eighth notes with 'x' marks above them. Repeat signs in measures 2-4.

B

Section B: Measures 1-4. Treble clef, common time. Dynamic marking: *v*. Eighth notes with 'x' marks above them. Repeat signs in measures 2-4. Measure 4 has a final flourish.

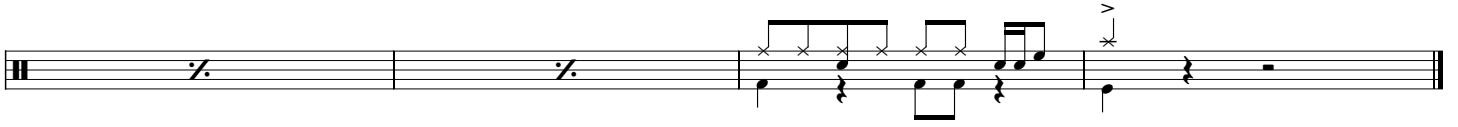
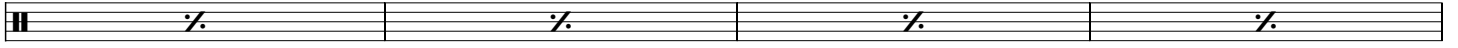
C

Section C: Measures 1-4. Treble clef, common time. Dynamic marking: *v*. Eighth notes. Repeat signs in measures 2-4.

Section C: Measures 5-8. Treble clef, common time. Dynamic marking: *v*. Eighth notes. Repeat signs in measures 6-8. Measure 8 has a *cresc.* marking.

D

Section D: Measures 1-4. Treble clef, common time. Dynamic marking: *v*. Eighth notes with 'x' marks above them. Repeat signs in measures 2-4.



8th note feel (8 Beat)

わかぎミュージック
パターン / フィルインまとめ

♩ = 100

■ リズムパターン

1. (H.H. オープンでも練習しておく)

Musical notation for rhythm pattern 1. It consists of a single staff with a treble clef and a common time signature (C). The notation shows a sequence of eighth notes with 'x' marks above them, indicating a specific feel or articulation. The pattern is repeated for 8 beats, with a double bar line and repeat sign at the end.

Musical notation for rhythm pattern 2. It consists of a single staff with a treble clef and a common time signature (C). The notation shows a sequence of eighth notes with 'v' marks above them, indicating a specific feel or articulation. The pattern is repeated for 8 beats, with a double bar line and repeat sign at the end.

Musical notation for rhythm pattern 3. It consists of a single staff with a treble clef and a common time signature (C). The notation shows a sequence of eighth notes with 'x' marks above them, indicating a specific feel or articulation. The pattern is repeated for 8 beats, with a double bar line and repeat sign at the end.

■ フィルイン

A. (フィルイン前の右手パートは各パターンの通り)

Musical notation for fill-in A. It consists of a single staff with a treble clef and a common time signature (C). The notation shows a sequence of eighth notes with 'x' marks above them, indicating a specific feel or articulation. The pattern is repeated for 8 beats, with a double bar line and repeat sign at the end.

B. cresc.

Musical notation for fill-in B. It consists of a single staff with a treble clef and a common time signature (C). The notation shows a sequence of eighth notes with 'v' marks above them, indicating a specific feel or articulation. The pattern is repeated for 8 beats, with a double bar line and repeat sign at the end.

8th note feel (8 Beat)

わかぎミュージック

作曲：富樫 誠
採譜者：富樫 誠

♩ = 100

A

Handwritten musical notation for section A. It consists of four staves. The first staff begins with a treble clef and a common time signature 'C'. The notation is a single eighth note on the first line (F4) followed by three rests, one in each of the remaining three measures. The piece ends with a double bar line at the end of the fourth measure.

B

Handwritten musical notation for section B. It consists of four staves. The notation is a single eighth note on the second line (G4) followed by three rests, one in each of the remaining three measures. The piece ends with a double bar line at the end of the fourth measure.

C

Handwritten musical notation for section C. It consists of four staves. The notation is a single eighth note on the third line (A4) followed by three rests, one in each of the remaining three measures. The piece ends with a double bar line at the end of the fourth measure.

D

Handwritten musical notation for section D. It consists of four staves. The notation is a single eighth note on the fourth line (B4) followed by three rests, one in each of the remaining three measures. The piece ends with a double bar line at the end of the fourth measure.